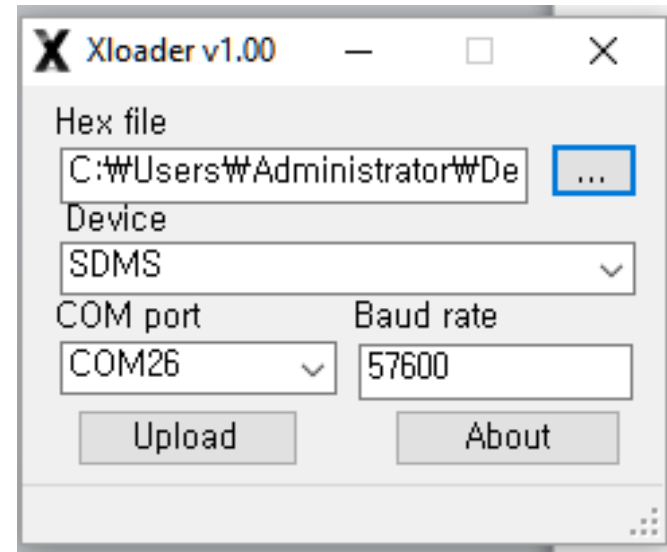


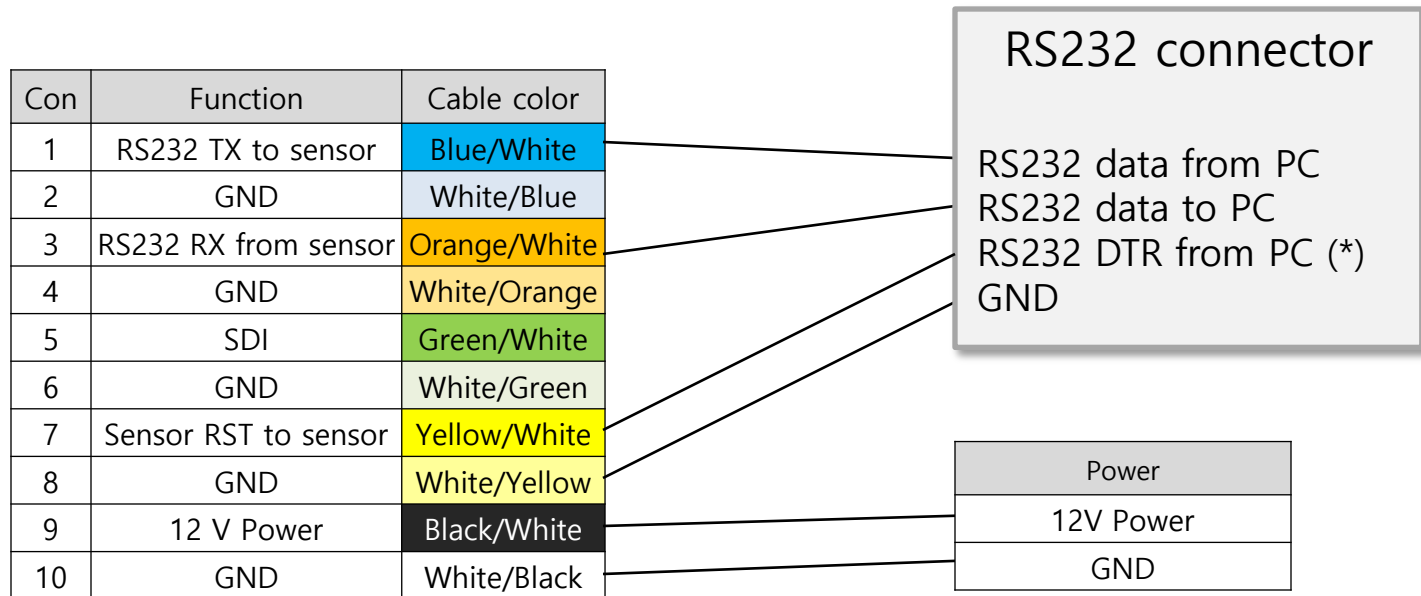
Firmware Upgrade through RS-232 interface

1. Connect an RS-232 cable between your PC and the sensor as shown in the picture 2 and 3
2. Run "Xloader" program and check if you get a pop-up window as shown in the picture.
3. Choose the right COM port by clicking V tab.
4. Select a Hex file. (sdmsxx.cpp.hex or latest one)
5. Device has to be SDMS and Baud rate should be 57600.
6. Click the Upload button.
7. It takes about a minute
8. If somehow, it doesn't finish, disconnect the RS232 cable and reconnect and try 1 through 6 again



Picture 1

RS232 interface to a PC for firmware update



- DTR is an RS-232C output from PC, and changes -12V to +12V as the programming starts.